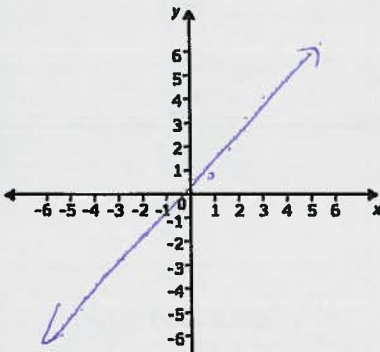
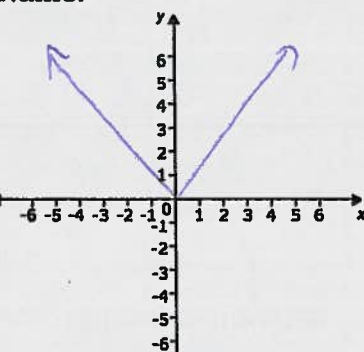
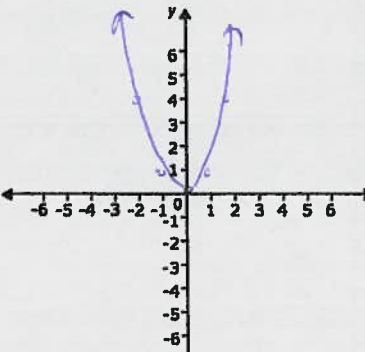
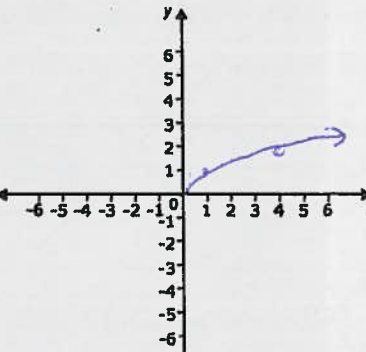
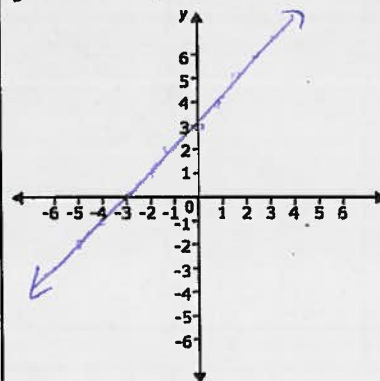
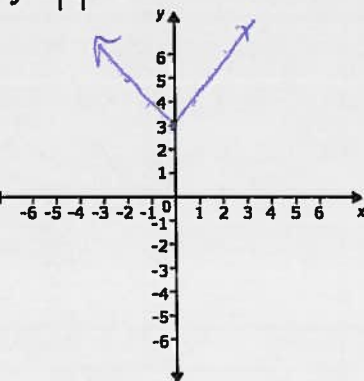
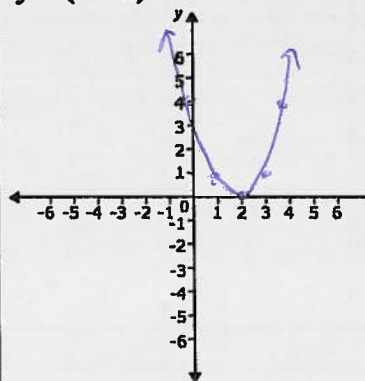
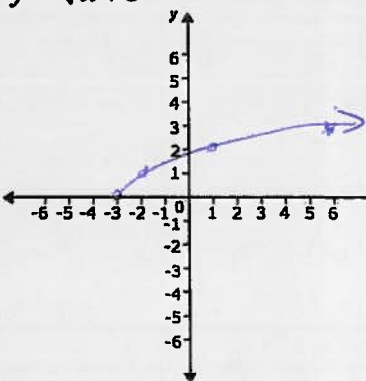


Introduction to Transformations

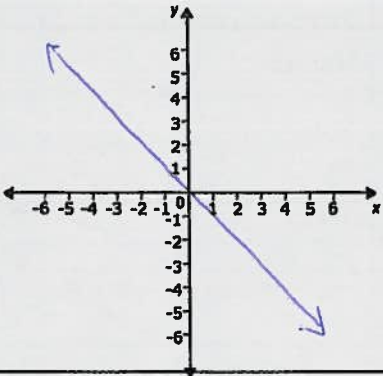
Name KEY

Graph the equations using your graphing calculator. Make a sketch of what you see.

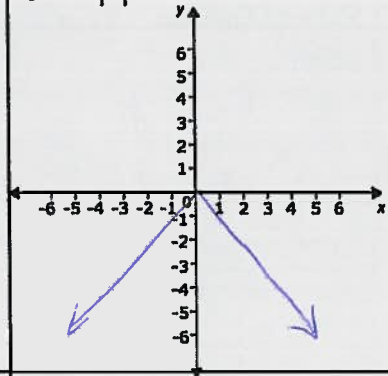
<p>Parent Graph: $y = x$ Name:</p> 	<p>Parent Graph: $y = x$ Name:</p> 	<p>Parent Graph: $y = x^2$ Name:</p> 	<p>Parent Graph: $y = \sqrt{x}$ Name:</p> 
<p>Characteristics of Parent: Line Through origin (y-int = 0) Slope: 1 Goes up</p>	<p>Characteristics of Parent: ∨ shape vertex on origin slope: ±1 opens up</p>	<p>Characteristics of Parent: Parabola ∪ vertex on origin opens up</p>	<p>Characteristics of Parent: ½ Sideways Parabola starts origin goes up</p>
<p>Adding and Subtracting:</p>			
<p>$y = x + 3$</p> 	<p>$y = x + 3$</p> 	<p>$y = (x - 2)^2$</p> 	<p>$y = \sqrt{x + 3}$</p> 
<p>How is this graph different from its parent? moved up 3</p>	<p>How is this graph different from its parent? moved up 3</p>	<p>How is this graph different from its parent? moved right 2</p>	<p>How is this graph different from its parent? moved left 3</p>
<p>1. What does adding or subtracting do to the graph? (choose one answer)</p>	<p>A. Stretches or Shrinks the graph compared to its parent graph</p>	<p>B. Translates the graph (moves it up/down or left/right) compared to the parent graph</p>	<p>C. Reflects the graph over the x-axis or y-axis</p>

Multiplying by a negative:

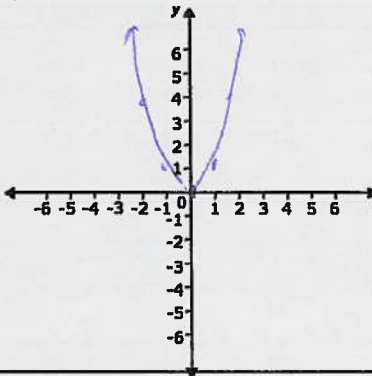
$y = -x$



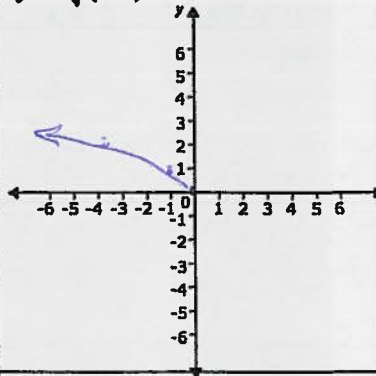
$y = -|x|$



$y = (-x)^2$



$y = \sqrt{-x}$



Differences from parent:

opposite direction
flipped over x or y-axis

Differences from parent:

opens down
flipped over x-axis

Differences from parent:

same
flipped over y-axis

Differences from parent:

goes left
flipped over y-axis

2. What does **multiplying by a negative** do to the graph?

A. Stretches or Shrinks the graph compared to its parent graph

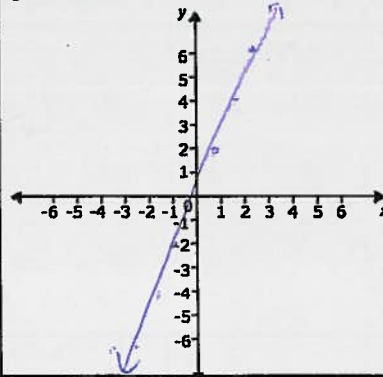
B. Translates the graph (moves it up/down or left/right) compared to the parent graph

C. Reflects the graph over the x-axis or y-axis

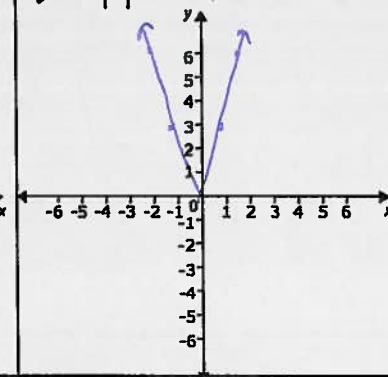
(choose one answer)

Multiplying by a positive number:

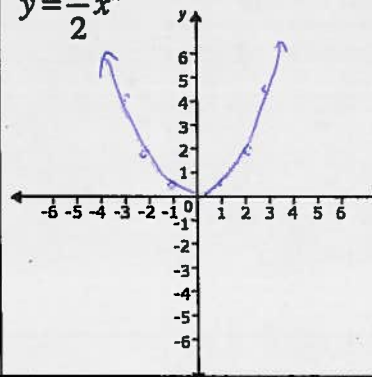
$y = 2x$



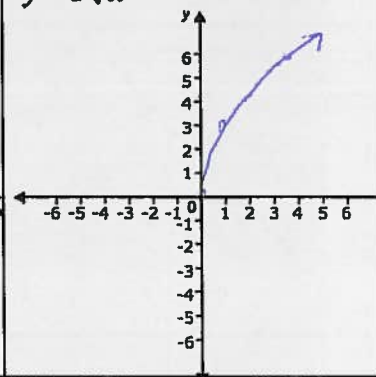
$y = 3|x|$



$y = \frac{1}{2}x^2$



$y = 3\sqrt{x}$



Differences from parent:

steeper

Differences from parent:

steeper/narrower

Differences from parent:

wider/shallower

Differences from parent:

steeper

2. What does **multiplying by a positive number** do to the graph?

A. Stretches or Shrinks the graph compared to its parent graph

B. Translates the graph (moves it up/down or left/right) compared to the parent graph

C. Reflects the graph over the x-axis or y-axis

(choose one answer)